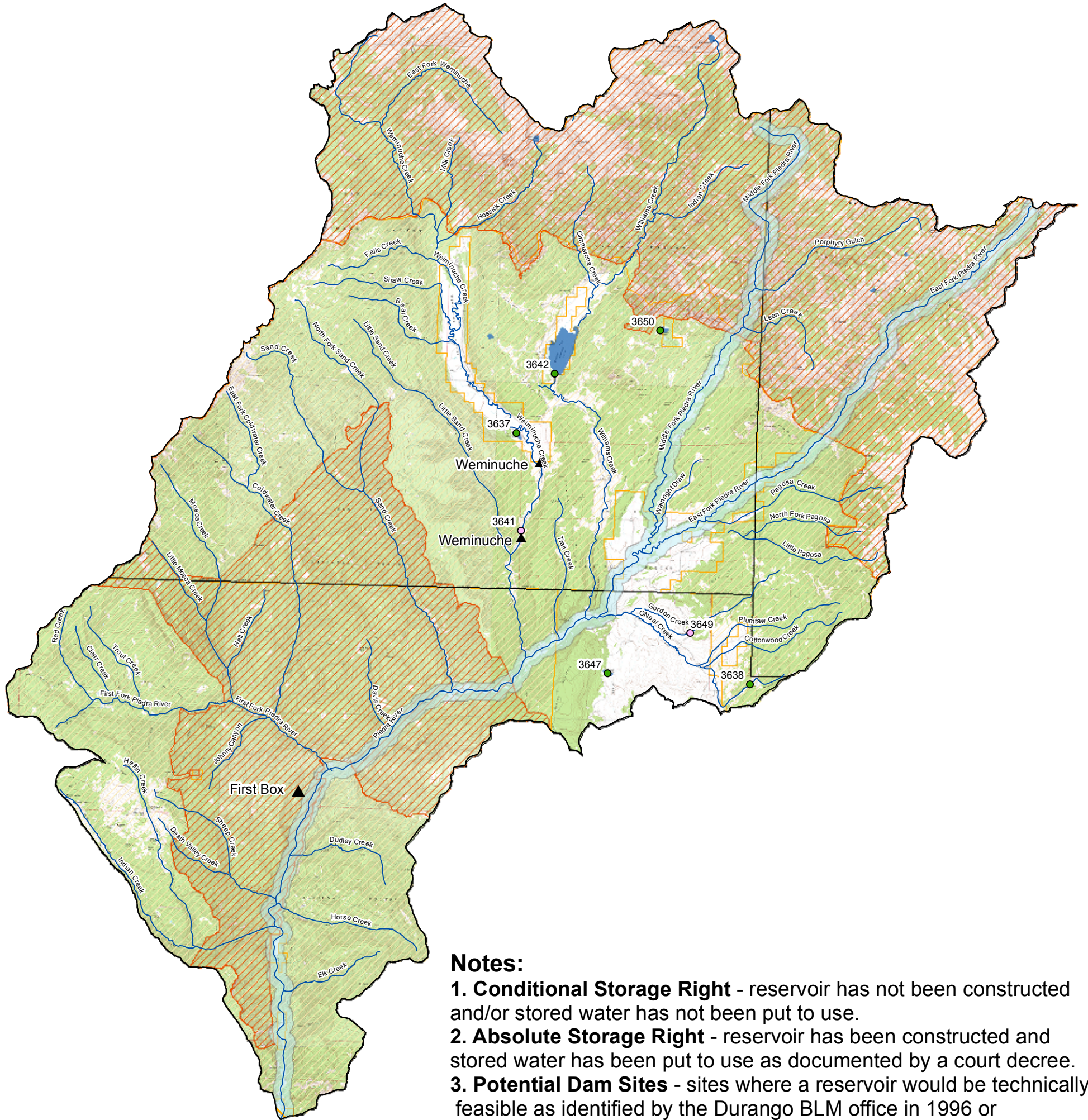




# Water Rights and Potential Dam Sites in the Piedra River Drainage Above Highway 160



### Notes:

- 1. Conditional Storage Right** - reservoir has not been constructed and/or stored water has not been put to use.
- 2. Absolute Storage Right** - reservoir has been constructed and stored water has been put to use as documented by a court decree.
- 3. Potential Dam Sites** - sites where a reservoir would be technically feasible as identified by the Durango BLM office in 1996 or locations of conditional storage rights existing as of 1996. These sites are included in the CWCB Damsite Inventory and in Figure 10-11 of the SWSI 2010 report.

### Legend

**Storage (>10af) Potential Dam Sites**  
**Water Right Status Capacity (AF)**

- |               |                 |
|---------------|-----------------|
| ● Absolute    | ▲ 40700         |
| ○ Conditional | ▲ 40701 - 41000 |
|               | ▲ 41001 - 74000 |

- Rivers
- HIGHWAYS
- Alternative A Suitable WSR
- County Boundary
- Wilderness Area
- USFS Land

